



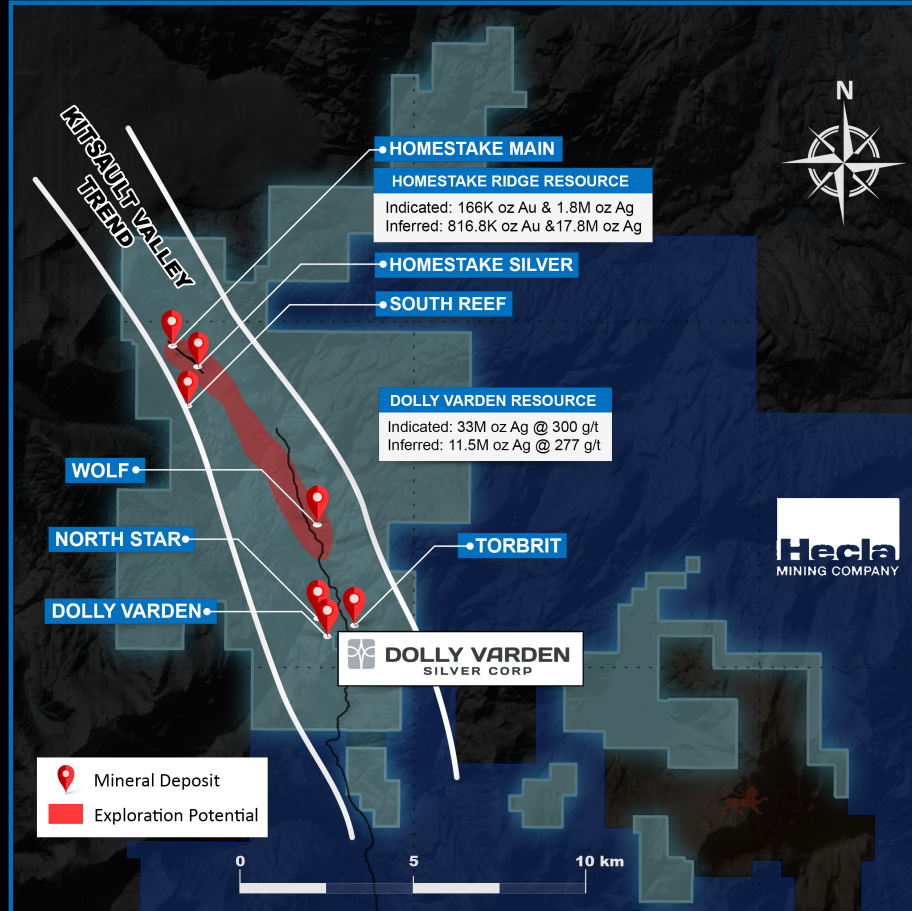
DOLLY VARDEN SILVER CORP

Advancing one of the largest high grade, undeveloped precious metal assets in BC's Golden Triangle

Dolly Varden Silver is a silver and gold exploration company focused on advancing it's 100 held Kitsault Valley project, which unites the Dolly Varden and Homestake Ridge projects

COMBINED PROJECT BENEFITS

- ◆ **163 km²** land package
- ◆ Large **50/50** silver & gold resources
- ◆ **Economies of scale & synergies** for exploration & development
- ◆ **Hub and spoke** mine model potential
- ◆ **Safe, mining friendly** jurisdiction with **stable mining & tax laws**
- ◆ Provides investors **leverage to silver & gold prices**
- ◆ Opportunity to further **increase shareholder value** by **de-risking** the project & through **discovery**

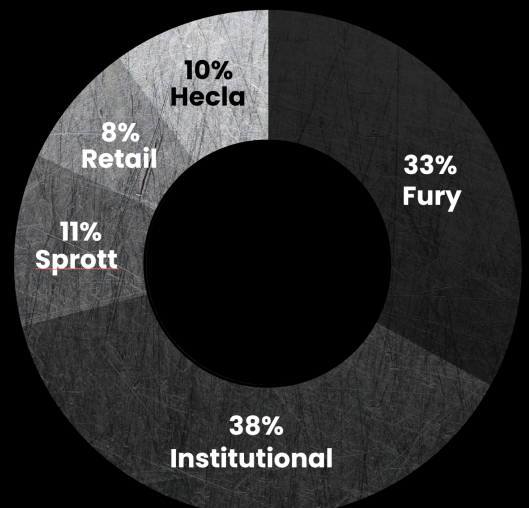


Combined Silver Equivalent: 47,180,475 oz Indicated & 90,530,925 oz Inferred
Combined Gold Equivalent: 629,073 oz Indicated & 1,207,079 oz Inferred

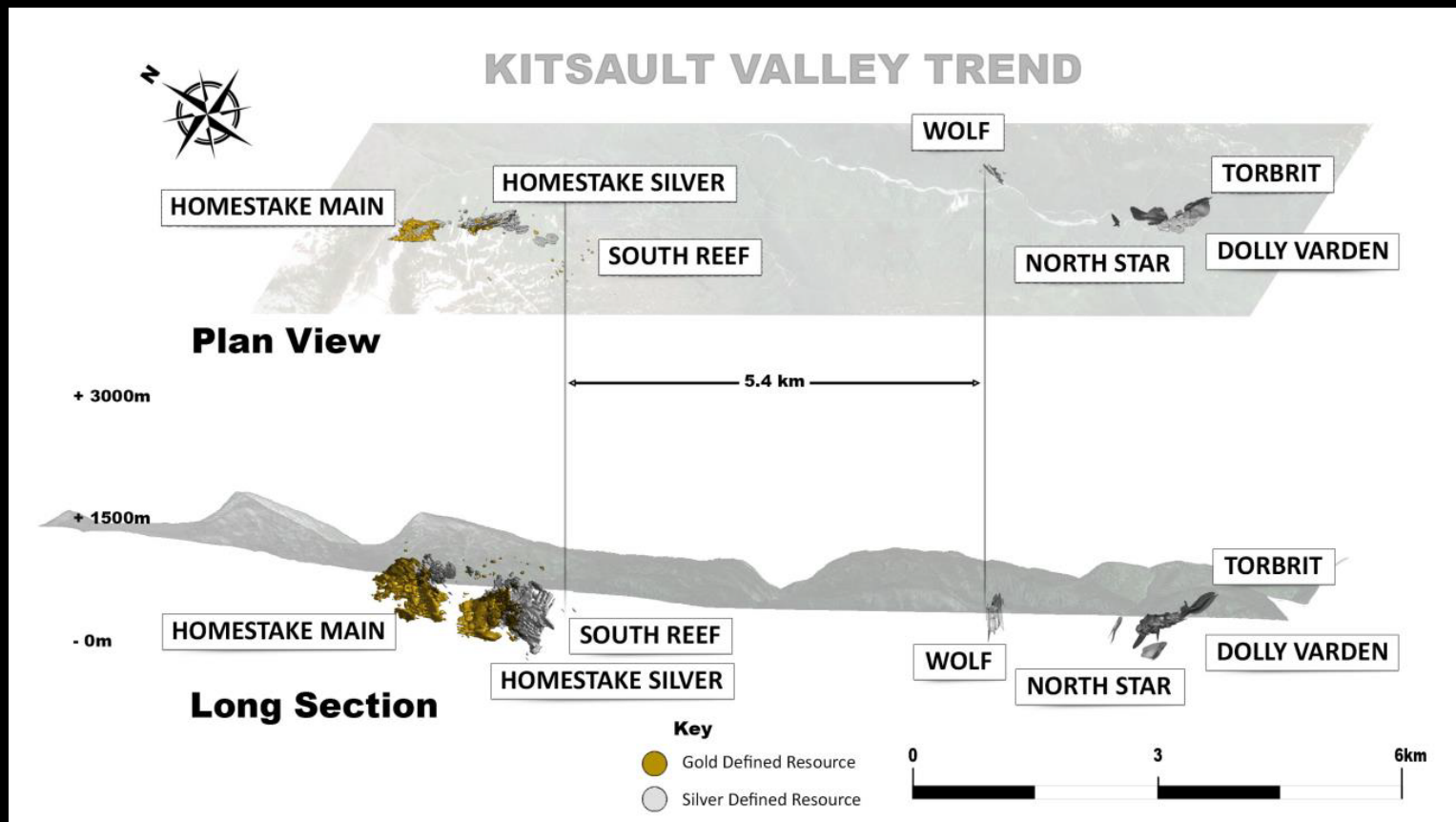
Capitalization

Shares Outstanding	230 M
Options	12 M
Fully-diluted	242 M
Market Cap	\$125 M CAD
Cash	\$20 M CAD
\$US Market Cap./Total AgEq oz	0.70/oz AgEq \$USD

As of September 6th, 2022



15kms of strike length with 5.4km underexplored area between South Reef and Wolf deposits



Combined Gold & Silver Resources

Category	Property	Cut-Off	Tonnes	Ag (g/t)	Ag oz	Au (g/t)	Au (oz)
Indicated	Dolly Varden	150 g/t Ag	3,417,000	299.8	32,931,000	-	-
	Homestake Ridge	2.0 g/t AuEq	736,000	74.8	1,800,000	7.02	165,993
Total					34,731,000		165,993
Inferred	Dolly Varden	150 g/t Ag	1,285,300	277.0	11,447,000	-	-
	Homestake Ridge	2.0 g/t AuEq	5,545,000	100.0	17,830,000	4.58	816,719
Total					29,277,000		816,719

Note: Indicated and Inferred Mineral Resources are not Mineral Reserves Mineral resources which are not mineral reserves do not have demonstrated economic viability There has been insufficient exploration to define the inferred resource as an indicated or measured mineral resource, and it is uncertain if further exploration will result in upgrading the resource to a measured resource category There is no guarantee that any part of the mineral resource discussed herein will be converted into a mineral reserve in the future See additional resource disclosure in the Appendix.